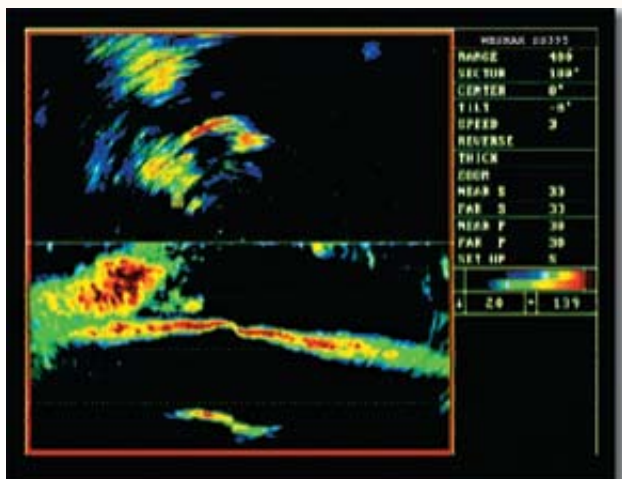


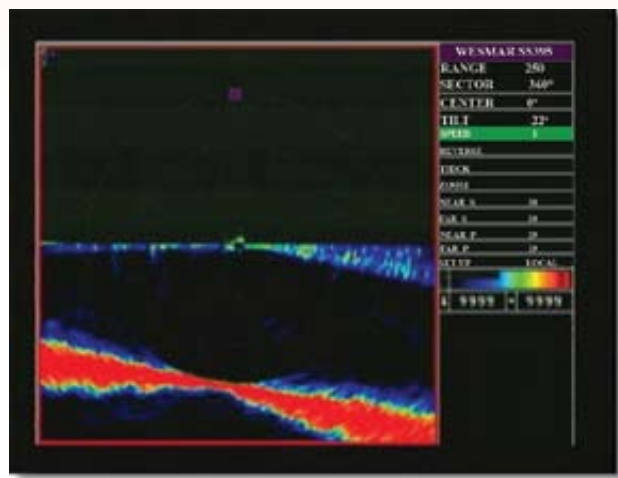
SS395 Sonar

Specialized Navigation and Fish Detection Sonar

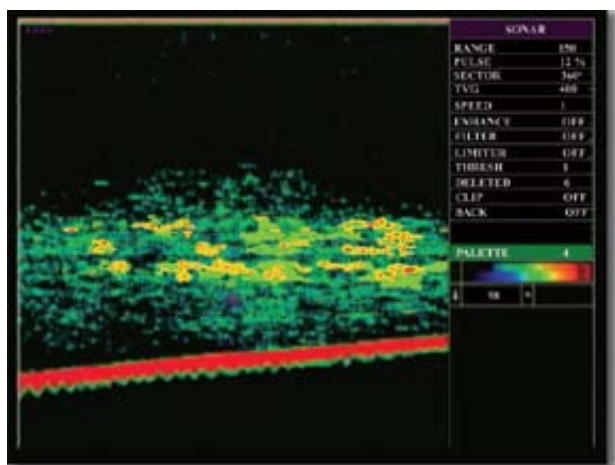
The SS395 Sonar is the combination of navigational sonar and fish detection technology used for specialized commercial fishing, game fishing, and navigation in ports around the world.



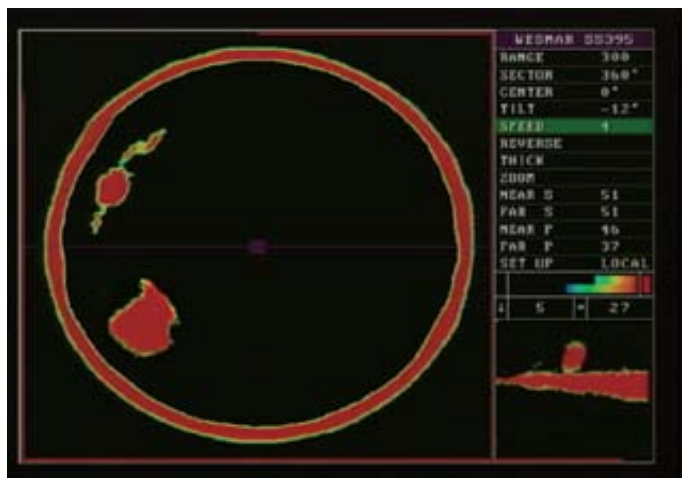
The SS395 in Split Screen Mode . The top screen shows fish ahead to port and profile shows fish off the bottom



The SS395 in Profile View.



The SS395 in Sounder Mode showing a light scaling of fish off the bottom.

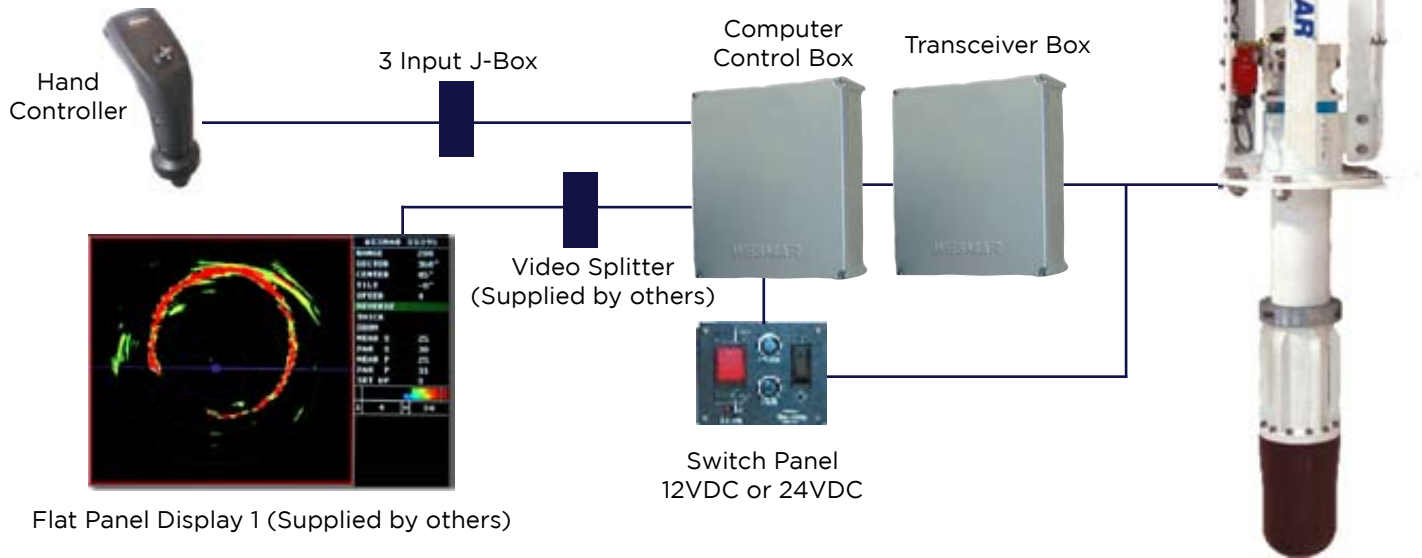


The SS395 in 360 degree view of bottom with fish to port. Thickness mode isolates the fish in lower right-hand screen.

SS395 Specifications

The SS395 is available in three frequencies, each with a standard electric hoist or optional long stroke hydraulic hoist. All hoist systems are designed to fit a one meter seachest unless otherwise specified.

Hydraulic Hoist & Soundome Assembly



SS395-E-60-110-160 Electric Hoist

HOIST:

- Height:
60, 110 — 60cm, 22.75in
160 — 50cm, 19.75in

- Minimum seachest:
60, 110 — 57cm, 22.5in
160 — 53cm, 21in

- Travel:
60, 110 — 30cm, 11in
160 — 20.3cm, 8in

- Seachest (Opt.):
60, 110 — 8in schedule 40
160 — 6in schedule 80

- Travel time:
60, 110 — 24 seconds
160 — 19 seconds

- Voltage:
60, 110, 160 — 12 to 24VDCis

SONAR:

- Voltage:
60, 110, 160 — 12 to 32V DC

- Transmit power:
60 — 1200 watts
110 — 1100 watts
160 — 1000 watts

- Sound Beam:
60 — 14 H X 9 V
110 — 8 H x 5 V
160 — 6.5 conical

SS395-H-60-110-160

Quick Retraction Hydraulic Hoist

HOIST:

- Height:
60, 110, 160 — 84cm, 33in

- Minimum seachest:
60 — 75cm, 29.5in
110 — 65cm, 25.5in
160 — 61cm, 24in

- Travel:
60, 110, 160 — 47cm, 18in

- Seachest (Opt.):
60, 110 — 8in schedule 40
160 — 6 in schedule 80

- Travel time:
60, 110, 160 — 4 seconds

- Voltage:
60, 110, 160 — 12 or 24VDC

SONAR:

- Voltage:
60, 110, 160 — 12 to 32V DC

- Transmit power:
60 — 1200watts
110 — 1100 watts
160 — 1000 watts

- Sound Beam:
60 — 14 H X 9 H
110 — 8.5 H x 6 V
160 — 6.5 conical



Western Marine Electronics 12140 NE 200th Street, Woodinville, WA 98072

Tel: (425) 481-2296 Fax: (425) 486-0909

www.wesmar.com dsoderberg@wesmar.com

PRODUCT WARRANTY

Commercial warranty and consumer limited warranty, disclaimer, and remedies. Seller warrants title, materials, and workmanship on equipment, except components manufactured by others for which seller assigns, as permitted, the original manufacturer's warranty. Seller's warranty period for all applicable express or implied warranties shall be ninety (90) days after installation or one (1) year after date of shipment to the original buyer, whichever time period expires first. Nonconforming equipment reported to seller during the applicable warranty period and returned to seller at buyer's expense and risk shall be repaired, or replaced at seller's option. If seller is unable or unwilling to repair or replace such reported and returned nonconforming equipment within a reasonable time, then buyer shall be entitled to a refund of the purchase price of the equipment as buyer's sole remedy. This paragraph sets forth buyer's exclusive remedies for nonconforming goods. This commercial warranty and consumer limited warranty is in lieu of all other warranties, express or implied, including design, course of dealing, merchantability, and fitness for a particular purpose.

NOTE: LIMITATION OF SELLER'S COMMERCIAL AND CONSUMER LIABILITY. Seller shall not be liable on any claim for loss of use, revenue, or profit, for injury, or for any other incidental or consequential damages, regardless of the basis for buyer's claim(s), including, but not limited to, the law of contract, warranty, or tort. In no case shall seller's liability on any claim(s) exceed the amount paid to seller for the purchased goods.