

# Class A/B Type **AIS Receiver** **SI-60RX**

Monitor other vessel's AIS Information at a Glance!!

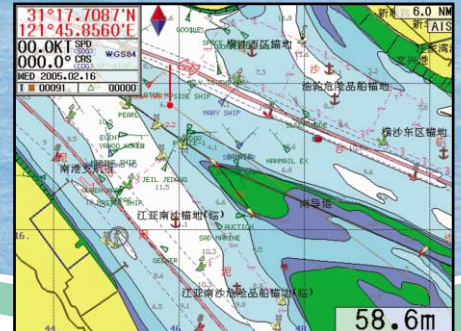
**NEW  
RX Only**



▶ AIS Receiver?

AIS receiver is designed to avoid collision by receiving and plotting data from other vessel's navigational information like nationality, Vessel name, Type of vessel, Heading, Speed, location and route.

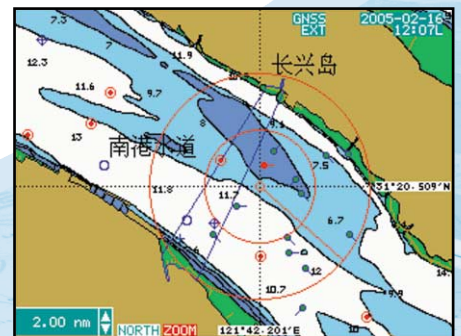
AIS receiver is the optimum equipment for small vessel's safety navigation and fishing.



▲ Plotter Screen



▲ PC+S/W Screen



▲ MKD(SI-30D) Screen

# AIS RECEIVER

**MODEL : SI-60RX**

## FEATURES

- ▶ Real time display of navigation information as MMSI, Vessel name and others on Samyung Navis chartplotters, AIS display(SI-30D) and any PC(S/W).
- ▶ Easy and simple installation process.
- ▶ Dual Baud Rate 4800 or 38400.
- ▶ Dual Channel Receiver (CLASS"A" & "B").
- ▶ RS-232,422 Input/Output Port.
- ▶ Transfer data AIS channel 87B(161.975MHz) & 88B(162.025MHz) onto Samyung display units.
- ▶ Simple connection to and from GPS through RS-232, 422
- ▶ LED display for easy status check-up (POWER,RX-A,RX-B,GPS, ERROR)

## SPECIFICATIONS

### ■ AIS RECEIVER

- ▶ RX frequency : 156.025MHz ~ 162.025MHz
  - RX Ch1 -Default channel 88B, AIS(162.025MHz)
  - RX Ch2 -Default channel 87B, AIS(161.975MHz)
- ▶ Channel spacing : 25KHz
- ▶ Operation: Simplex & Semi-duplex
- ▶ Antenna impedance : 50Ω(SO-239)
- ▶ Frequency stability rate : ±10PPM(-20℃ ~ +60℃)
- ▶ External interface : ITU/NMEA-0183
- ▶ Power supply : 12~24VDC, 0.4A Max.(DC 12V)
- ▶ Operation temperature : -15℃ ~ +55℃

## COMPONENTS

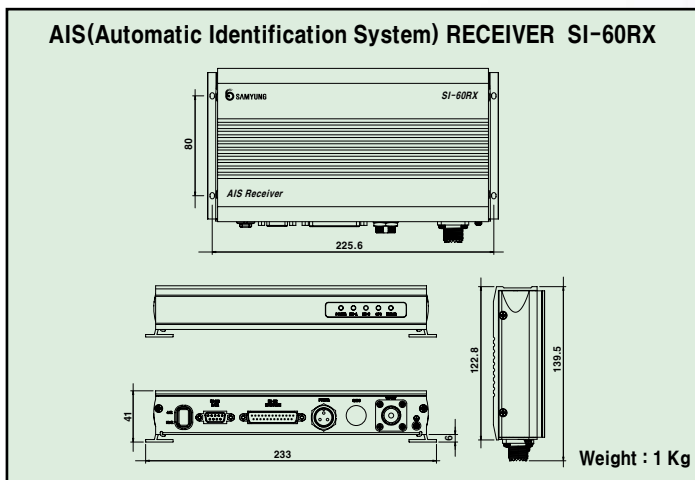
### ■ STANDARD

- ▶ AIS Receiver(SI-60RX)
- ▶ Installation Materials/Spare Parts
- ▶ Instruction Manual

### ■ OPTION

- ▶ VHF Antenna
- ▶ Power Supply(SP-300AD)
- ▶ MKD(SI-30D)
- ▶ PC+S/W
- ▶ NAVIS GPS Plotter

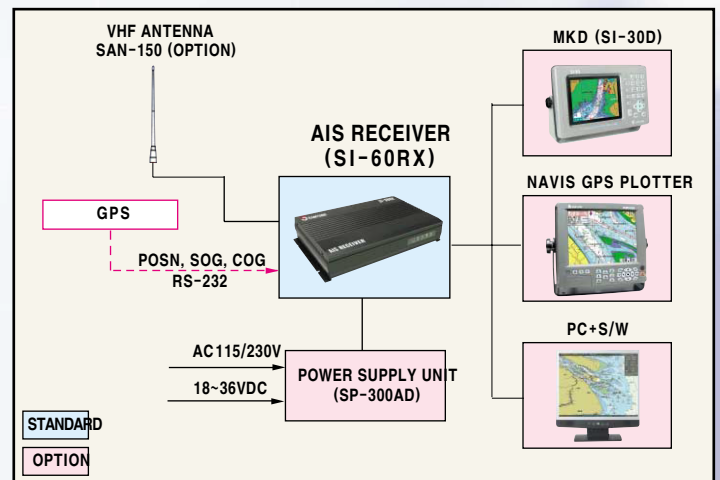
## DIMENSIONS



## DISPLAY UNIT



## CONFIGURATION



**SAMYUNG ENC Co.,Ltd.**

Head Office : 1123-17, Dongsam-Dong, Youngdo-Gu, Busan, Korea, 606-083  
 Tel : 82-51-601-5530(Rep.) Fax : 82-51-413-4446  
 A/S Center : 65-20, 2-Ga Namhang-Dong, Yungdo-Gu, Busan, Korea, 606-032  
 Tel : 82-51-601-5570~4(Rep.) Fax : 82-51-416-5515  
 Http : //www.samyungenc.com



KS Q ISO 9001:2015  
 SMI-2216Q



KAB-QC-42